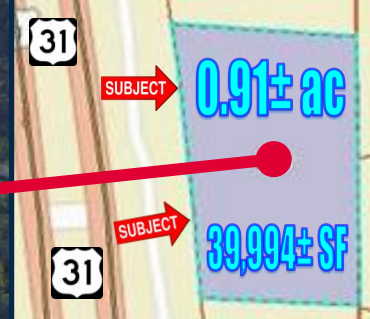


# LAND FOR SALE

MONTGOMERY HWY / HWY 31 / ACROSS FROM VESTAVIA CITY HALL & CVS

# \$65,000



**0.91± acre**

**SUBJECT**

**SUBJECT**

**SUBJECT**

Forest View Ln

Vesthaven Way

Montgomery Hwy

Montgomery Hwy

31

Montgomery Hwy

31

Merrivale Rd



31

BB&T

CVS/pharmacy

America's First Federal Credit Union



Southminster Presbyterian Church

Southminster Day School

America's First Federal Credit Union

## Shoppes At City Hall



### 1121 Montgomery Hwy-Vestavia Hills, AL 35216

- **Approx. 0.91± Acre or approx. 39,994± SF lot for sale**
- **Parcel ID: 28 00 30 3002 004.000**
- **Purchase for \$65,000**
- **Some utilities to site**
- **Currently zoned O-1 (Office Park District) PROPOSED Commercial**

Hills apartment

Vestavia Hills Municipal Court



Google

Imagery ©2018 Google, Map data ©2018 Google, United States, Terms, Send feedback, 100 ft L