

# OFFICE/WAREHOUSE FOR LEASE



## 2009 Agape Circle—Moody, AL 35004

- 12,000± Sq. Ft. Office Warehouse Building that was built in 2007
- Suite B is 2,400± Sq. Ft. (wide open)\* - \$950pm
- Suite C is 2,400± Sq. Ft. (contains 2 offices & reception area)\* - \$1,500pm
- \*Can combine for 4,800 Sq. Ft. of contiguous space (call for more details)
- Zoned B-2 (General Business)
- Convenient access to I-20 via Hwy 411 & Markeeta Spur Rd



Steve House **CCIM**

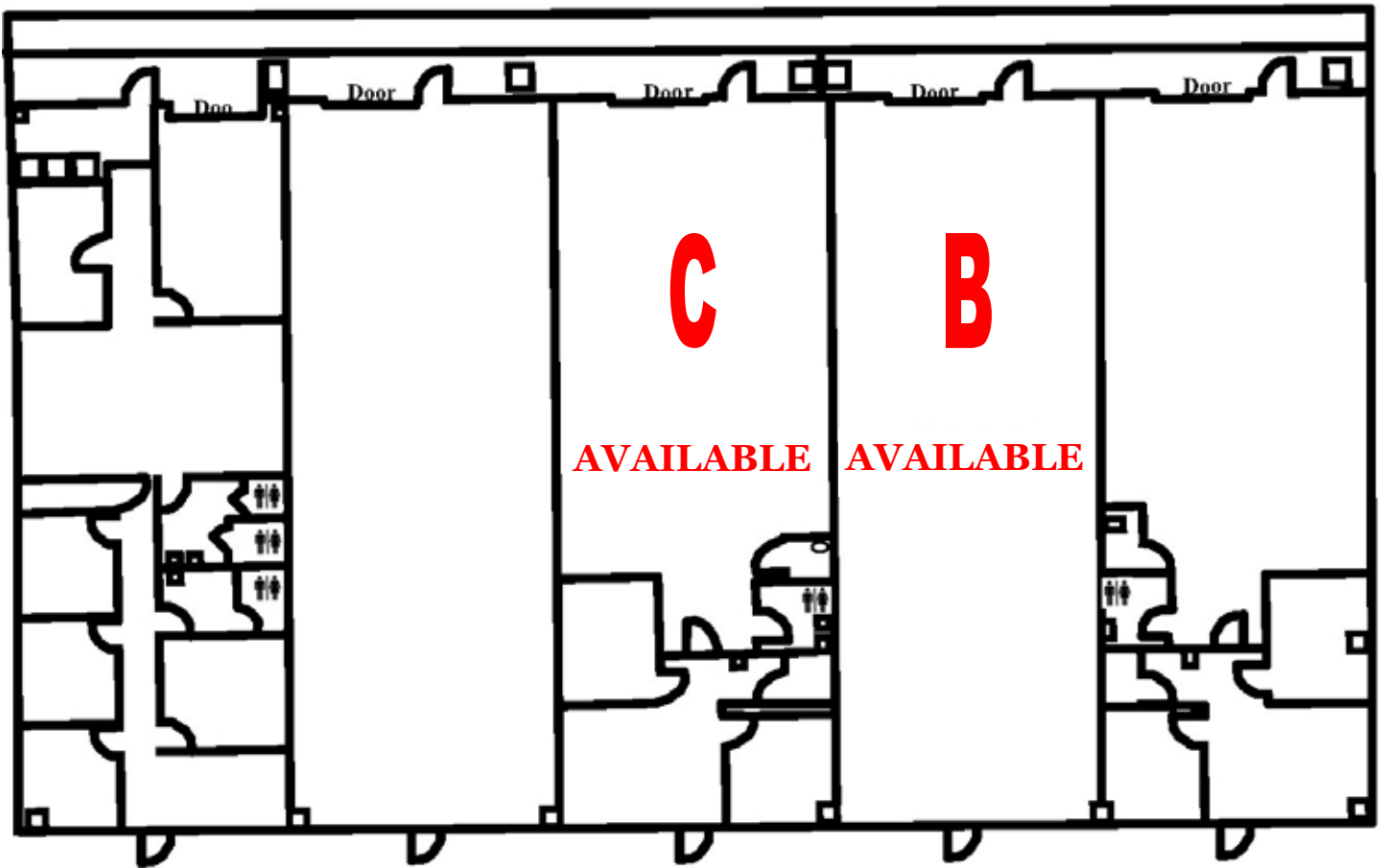
(205) 408-9911

[steve@ponderproperties.com](mailto:steve@ponderproperties.com)

Information deemed reliable but not guaranteed.

R051011PP

# REAR



# FRONT