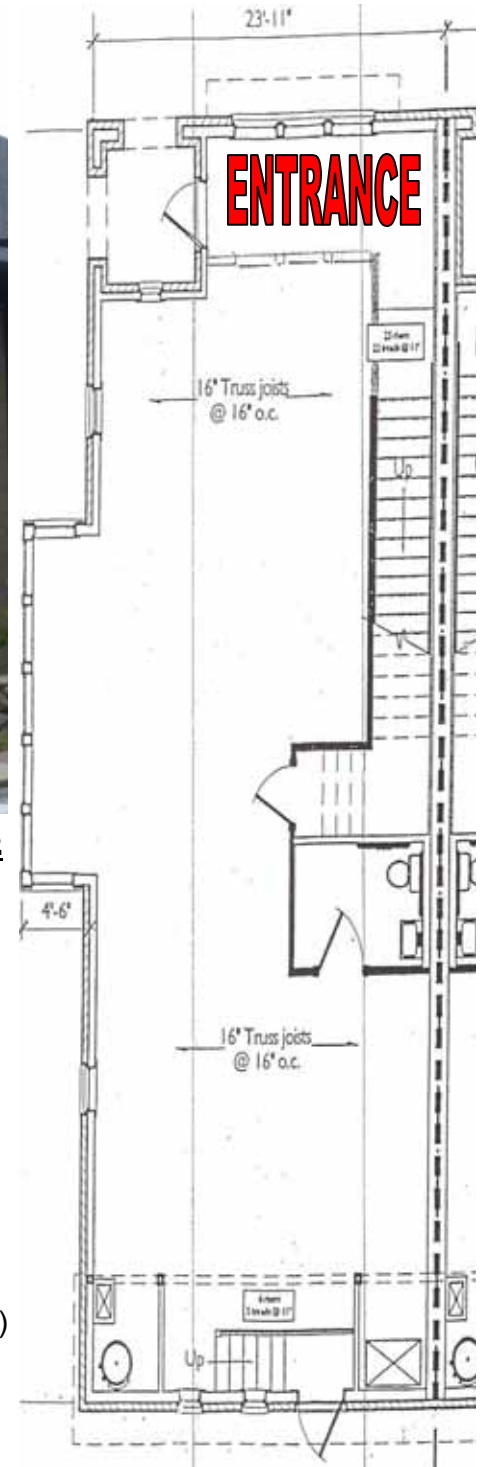


LEASE—RETAIL OR PROFESSIONAL

KELLEY BLDG



12 Olmstead Street, Ste 10—Birmingham, AL 35242

- 1,434 Sq. Ft. ground floor
- \$1,800 per month plus utilities
- Retail or Professional space (vanilla box)
- Attractive corner space with great corner exposure at intersection that takes you to/from the elementary school.
- Ideal for restaurant, retail shop or office
- Purchase both suite's 10 & 12 for \$440,000 (package deal—owner financing available)
- Suite 12 is 1,248 Sq. Ft. (2nd floor office space & is currently leased)
- Call for more details
- *Showings by appointment only!!!*



Information deemed reliable but not guaranteed.

R071210PP

850 Corporate Parkway
Suite 106
Birmingham, AL 35242
Phone: (205)408-9911
Fax: (205)408-9782